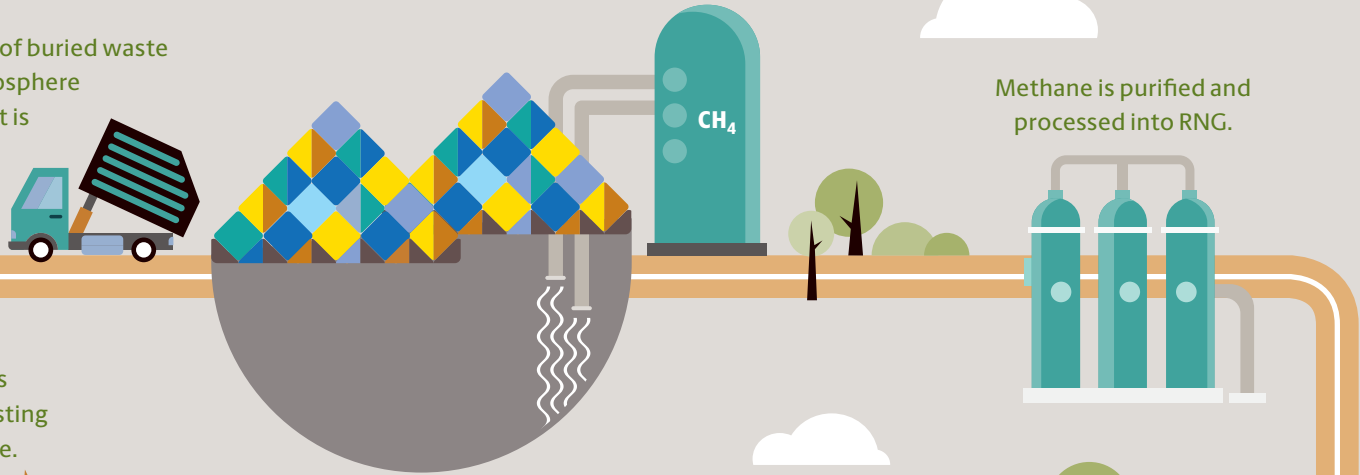




Trash to Gas

Renewable natural gas (RNG), or biomethane, is derived from many abundant renewable sources, including decomposing organic waste in landfills, wastewater treatment, and agriculture. RNG can be used in any natural gas vehicle. Our commitment to investing in natural gas infrastructure offers a unique opportunity to use this fuel in our extensive fleet.

Methane gas is pulled from acres of buried waste before it is released into the atmosphere as a greenhouse gas emission that is 28 times more damaging to the ozone than CO₂.



RNG is distributed across the country through existing natural gas infrastructure.



RNG displaces conventional fuel and its associated carbon emissions.



The total production and use of RNG results in GHG emissions that are up to 90% less than with diesel.