



THE UPS FOUNDATION

AT-A-GLANCE

OUR MISSION

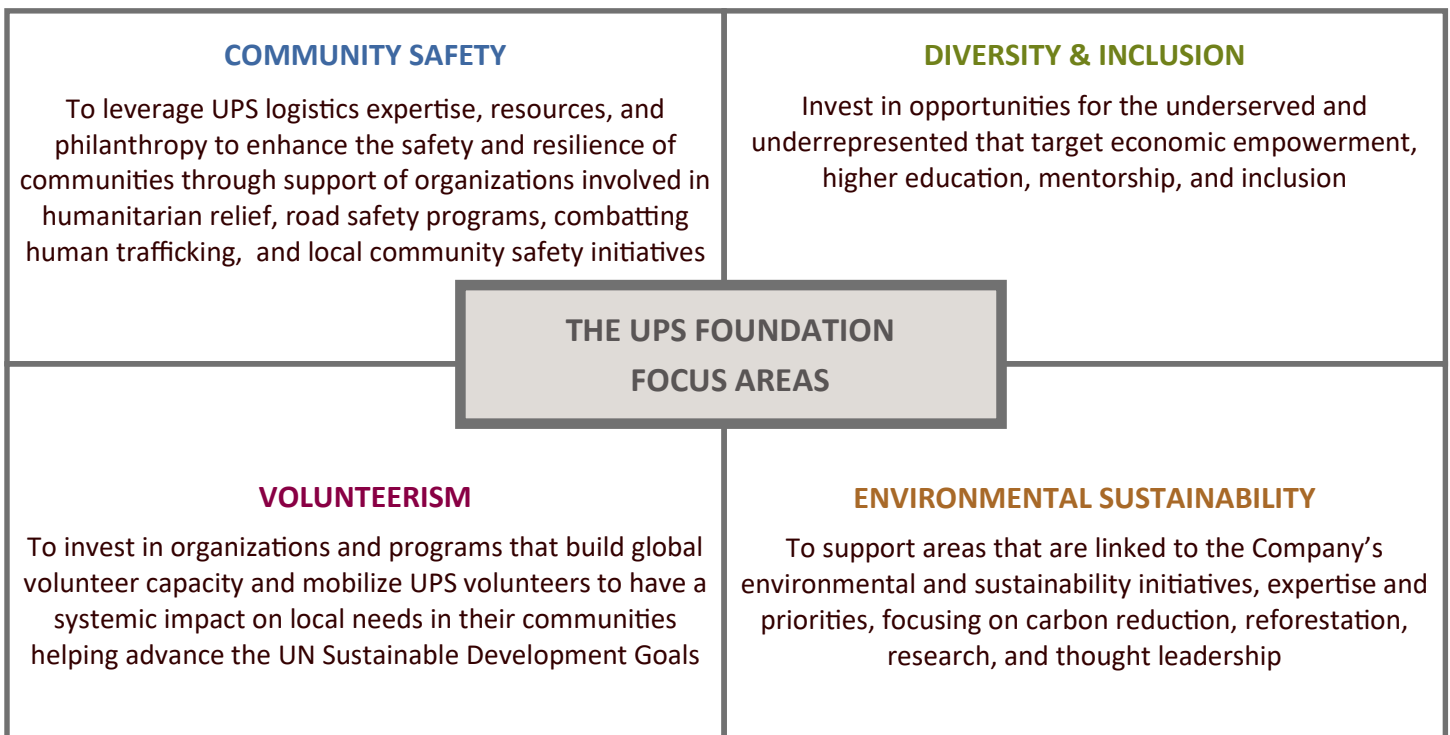
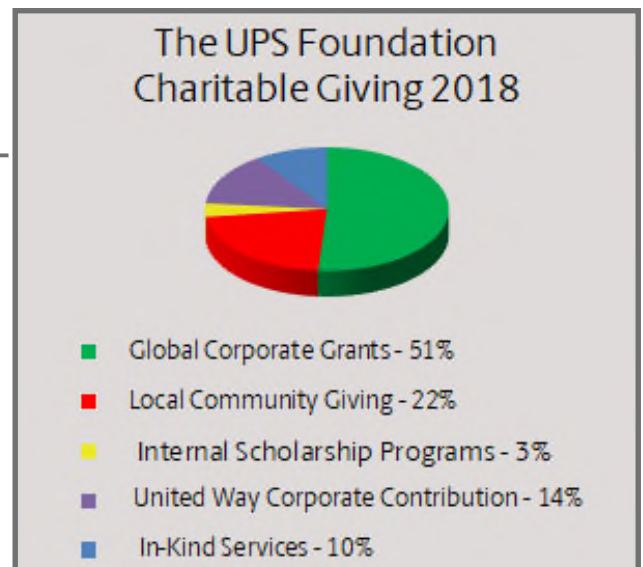
Our mission is to help build stronger, safer, and more resilient communities around the world.

OUR FOCUS

Founded in 1951, The UPS Foundation leads UPS's global citizenship efforts and philanthropy. The UPS Foundation's philanthropic approach centers on four focus areas that reflect our mission and UPS's corporate values and expertise: Diversity & Inclusion, Environmental Sustainability, Community Safety, and Volunteerism. We believe the best way to give back is to draw upon our collective strengths, linking philanthropic dollars with our logistics expertise, transportation assets, and the skills and passion of our people to create a shared value for our communities and people around the world.

2018 QUICK FACTS

Total Philanthropic Contributions	US \$114.9 M
Foundation Charitable Giving	US \$60.2 M
Employee United Way Contributions	US \$54.4 M
Employee Volunteer Hours	3 million
Number of Organizations Supported	Over 4,300
Global Philanthropic Reach	Over 170 countries
International Giving*	33%





THE UPS FOUNDATION

AT-A-GLANCE

SIGNATURE PROGRAMS

United Way Partnership	Each year our employees participate in the annual United Way fundraising campaign. With a matching pledge from The UPS Foundation, funds raised help support community-based organizations and assist United Way in promoting grade level reading, high school graduation, and financial stability.	Over \$1.5 billion donated since 1982
UPS Global Forestry Initiative	UPS created and helps support a global network of partners who plant, protect, and preserve trees all over the world to offset carbon emissions and reduce air pollution. In 2015, we launched a program to plant “15M Trees by 2020.”	Over 12.5 million trees planted across 56 countries since 2011 & 15 million pledged by 2020
UPS Humanitarian Relief & Resilience and Public Health System Strengthening	The UPS Foundation provides global humanitarian relief and public health partners with grant funding, in-kind support, and supply chain expertise to strengthen supply chains, disaster preparedness, emergency response, and post-crisis recovery efforts. Key partners include: Gavi, Red Cross, UNHCR, CARE, UNICEF, UNOCHA, World Food Programme, and others.	Over \$11 million invested & 627 in-kind shipments across 71 countries in 2018
Global Road Safety	Our state-of-the-art interactive program, UPS Road Code®, teaches novice drivers the safety “code” used by UPS drivers, who also serve as volunteer instructors for the program. We also invest in organizations around the world that promote safe driving.	Over 57,000 UPS Road Code graduates since 2009
UPS Global Volunteerism	UPS employees all over the world are passionate about volunteering throughout the year. We place special emphasis on community service each October during UPS’s Global Volunteer Month. In 2014, UPS pledged to contribute “20M volunteer service hours by 2020.”	3 million volunteer hours in 2018 (93 percent to goal of 20 million by 2020)
Local Community Investment Grants	The UPS Foundation allocates grant funding for each UPS region, district, and business unit to determine which organizations to support in their local communities. Local Community Involvement Committees are able to direct funds where they are needed most.	Over \$20 million in local community giving in over 50 countries in 2018

GIVING TO CAUSES OUTSIDE OF FOCUS AREAS

- **The UPS Foundation does not accept unsolicited grant requests.** The best way to engage UPS locally is through the participation of UPS volunteers.
- **Arts & Culture** – May be supported through local community investment grants and/or charitable sponsorships if the cause addresses unique community needs and if there is extraordinary engagement by UPS volunteers. Otherwise, not supported through direct grants from the Foundation.
- **Health, Diseases & Human Services** – UPS supports United Way, the world’s largest human services organization, which provides these services. In addition, health and disease-related causes may be supported through local community investment grants and/or charitable sponsorships if the cause addresses unique community needs and if there is extraordinary engagement by UPS volunteers. Otherwise, not supported through direct grants from the Foundation.
- **Early Youth Development and Education & Family Programs** – In the U.S., early childhood education and family programs are supported through our United Way partnership and are funding priorities for the Annie E. Casey Foundation, established by UPS’s founder. In addition, may be supported through local community investment grants and/or charitable sponsorships if the cause addresses unique community needs and if there is extraordinary engagement by UPS volunteers. Otherwise, not supported through direct grants from the Foundation.
- **Faith-based Organizations** – May be supported through local community investment grants as long as programs funded are inclusive of all denominations and do not discriminate against anyone in the communities they serve.
- **Animal-related Causes** – Reviewed on a case-by-case basis. The Foundation prioritizes its limited resources on programs that directly support human welfare and impact the human condition.
- **In-kind Shipping** – The UPS Foundation provides in-kind transportation to our Humanitarian Relief & Resilience Program partners. These established partnerships ensure that UPS can make a critical difference in communities affected by disaster or other crises. UPS does not transport collection drive items or ship items for individuals. Product donors should go to www.good360.org to view the needs of relief agencies active in response and recovery efforts.